

# FOR LEASE

## Sprague Square Center Middleburg Heights, Ohio

2,380 - 7,200 square feet available



**Description:** 7764 - 7780 W. 130th Street. The plaza sits at the lit intersection of W. 130th and Sprague about 1.5 miles North of York Road and 2 miles South of Home Depot and Walmart. The plaza is 32,080 sq ft.

**Co-Tenants:** Dollar General, Subway, Edward Jones, Rock Creek Kitchen, etc.

**Nearby:** CVS, Walgreens, Dollar Tree, Great Clips, Howard Hanna, Verizon, Advance Auto Parts, Subway, Antonio's Pizza, Tony Maloney's, Dairy Queen, etc.

### Demographics:

**Population:**

1 mile: 7,354

3 miles: 66,768

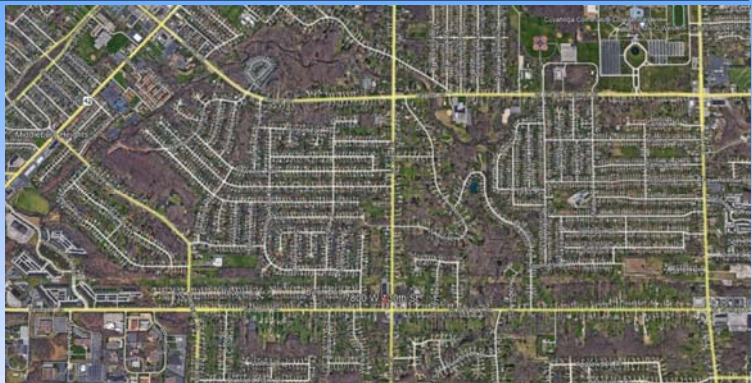
5 miles: 190,372

**Median Household Income:**

1 mile: \$74,836

3 miles: \$61,944

5 miles: \$64,982



For more information contact:  
Craig Cohen  
[Craig@CohenCommercialGroup.com](mailto:Craig@CohenCommercialGroup.com)



Cohen Commercial Group  
6151 Wilson Mills Road, Suite 100  
Highland Hts, Ohio 44143  
(216) 223-5060

The information submitted herein is not guaranteed. Although obtained from reliable sources, it is subject to errors, omissions, prior sale/ lease and withdrawal from the market without notice. Cohen Commercial Group, its affiliates, agents, and employees, and Seller/Landlord make no representations about the accuracy of said information and recommend individual investigation to certify its validity.